


# driade

## VIGILIUS

*by Matteo Thun & Antonio Rodriguez*



## CAMPIONARIO TESSUTI-PELLI/ FABRIC-LEATHER SAMPLES

 **N.B.:** From June 25, 2021, all upholstered seating furniture imported or sold in the United States must comply with the flammability test specified by California Technical Bulletin 117-2013 (aka "SOFFA"). This solution is compatible only with fabrics and/or materials that contains a minimum of 75% of natural fibers. The following are the only fabrics suitable among those in our current range: Barcellona, Cairo, Cipro outdoor, Delhi, Lisbona, Santorini outdoor.





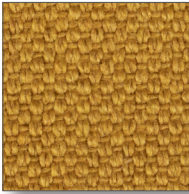






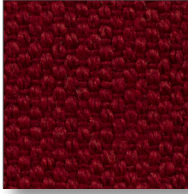




**driade** s.r.l. Alzaia Trieste 49 - 20094 Corsico (Mi) Italy t. +39 0523 818618  
Customer Service e-mail: [ccare.ecommerce@driade.com](mailto:ccare.ecommerce@driade.com)  
[www.driade.com](http://www.driade.com)

CAT.A

700 COTONE BONIFACIO - COTTON BONIFACIO

Composizione/Composition: 100% CO Altezza/Height:138/140 cm. Peso/Weight: 560gr. Abrasione/Abrasion: 20.000 Martindale (uso pubblico, uso regolare/public use, regular use).  
BS5852:0 1979 ign cigarette test pass.



	002 BIANCO WHITE		004 AVORIO IVORY		016 TORTORA TAUPE		080 MARRONE CHIARO LIGHT BROWN
	019 OCRA OCHRE		062 VERDE CHIARO LIGHT GREEN		066 VERDE SCURO DARK GREEN		H03 VERDE ACQUA TEAL
	061 AZZURRO INDACO INDIGO BLUE		024 ROSA PINK		039 ROSSO RED		040 BORDEAUX BURGUNDY
	072 BLU BLUE		045 GRIGIO CHIARO LIGHT GREY		050 GRIGIO SCURO DARK GREY		091 NERO BLACK

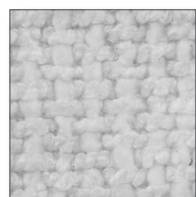
I colori sono indicativi. Non è possibile garantire uniformità di tono nella tintura dei lotti di tessuto. Resta inteso che lievi differenze di colore verranno accettate al momento dell'ordine.

The colors are just indicative. Actually a steady tone of lots cannot be guaranteed. It remains understood that any slight colour difference will be accepted in case an order is placed.

## CAT.A

701 POLIESTERE MARSIGLIA - *POLYESTER MARSIGLIA*

Composizione/Composition: 100% PL. Altezza/Height: 140 cm. Peso/Weight: 840gr. Abrasione/Abrasion: 80.000 Martindale (uso pubblico, uso molto intensivo/public use, very intensive use. Idrorepellente, irrestringibile/Water repellent, unbreakable.



002  
BIANCO  
WHITE



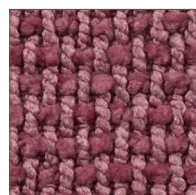
004  
AVORIO  
IVORY



016  
TORTORA  
TAUPE



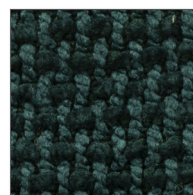
018  
GIALLO CHIARO  
LIGHT YELLOW



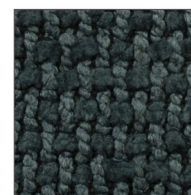
024  
ROSA  
PINK



063  
VERDE  
GREEN



066  
VERDE SCURO  
DARK GREEN



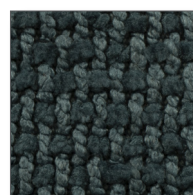
069  
PETROLIO  
PETROL GREEN



072  
BLU  
BLUE



045  
GRIGIO CHIARO  
LIGHT GREY



050  
GRIGIO SCURO  
DARK GREY

I colori sono indicativi. Non è possibile garantire uniformità di tono nella tintura dei lotti di tessuto. Resta inteso che lievi differenze di colore verranno accettate al momento dell'ordine.

*The colors are just indicative. Actually a steady tone of lots cannot be guaranteed. It remains understood that any slight colour difference will be accepted in case an order is placed.*

CAT.A

702 MISTO COTONE PETRA - COTTON MIX PETRA

Composizione/Composition: 50% CO riciclato/recycled CO, 35% PL, 15% PC. Altezza/Height: 140 cm. Peso/Weight: 490gr. Abrasione/Abrasion: 20.000 Martindale (uso pubblico, uso regolare/public use, regular use). Antigoccia, idrorepellente/Anti-drip, water repellent.



002  
BIANCO  
WHITE



011  
SABBIA  
SAND



016  
TORTORA  
TAUPE



H18  
ORO  
GOLD



040  
BORDEAUX  
BURGUNDY



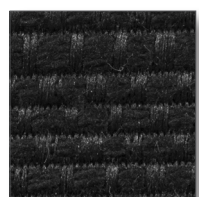
063  
VERDE  
GREEN



085  
TESTA DI MORO  
DARK BROWN



072  
BLU  
BLUE



091  
NERO  
BLACK

I colori sono indicativi. Non è possibile garantire uniformità di tono nella tintura dei lotti di tessuto. Resta inteso che lievi differenze di colore verranno accettate al momento dell'ordine.

The colors are just indicative. Actually a steady tone of lots cannot be guaranteed. It remains understood that any slight colour difference will be accepted in case an order is placed.



CAT.A

703 MISTO COTONE DAMASCO - COTTON MIX DAMASCO

Composizione/Composition: 50% CO riciclato/recycled CO, 35% PL, 15% PC. Altezza/Height: 140 cm. Peso/Weight: 590gr. Abrasione/Abrasion: 24.000 Martindale (uso pubblico, uso regolare/public use, regular use). Antigoccia, idrorepellente/Anti-drip, water repellent.



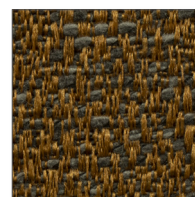
002  
BIANCO  
WHITE



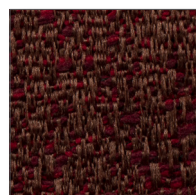
011  
SABBIA  
SAND



016  
TORTORA  
TAUPE



H18  
ORO  
GOLD



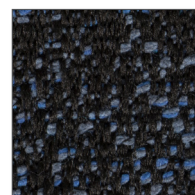
040  
BORDEAUX  
BURGUNDY



063  
VERDE  
GREEN



085  
TESTA DI MORO  
DARK BROWN



072  
BLU  
BLUE



091  
NERO  
BLACK

I colori sono indicativi. Non è possibile garantire uniformità di tono nella tintura dei lotti di tessuto. Resta inteso che lievi differenze di colore verranno accettate al momento dell'ordine.

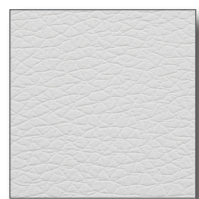
The colors are just indicative. Actually a steady tone of lots cannot be guaranteed. It remains understood that any slight colour difference will be accepted in case an order is placed.

## CAT.A

## 02 ECOPELLE COLORADO - COLORADO ECOLEATHER

Composizione/Composition: 68% PVC, 30% CO, 2% PU. Altezza/Height: 140 cm. Peso/Weight: 460 gr/mq. Abrasione/Abrasion: 100.000 Martindale (uso pubblico, uso molto intensivo/  
public use, very intensive use). Spessore/Thickness 1.0/1.1 mm

PULIRE SOLO CON PANNINO UMIDO E DETERGENTE NEUTRO/CLEAN ONLY WITH A DAMP CLOTH AND A NEUTRAL DETERGENT



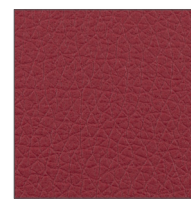
002  
BIANCO  
WHITE



004  
AVORIO  
IVORY



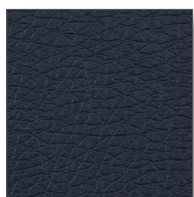
015  
BEIGE  
BEIGE



039  
ROSSO  
RED



066  
VERDE SCURO  
DARK GREEN



072  
BLU  
BLUE



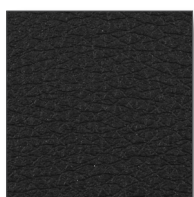
045  
GRIGIO CHIARO  
LIGHT GREY



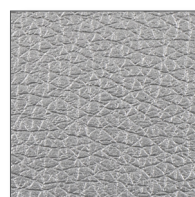
044  
GRIGIO  
GREY



081  
MARRONE  
BROWN



091  
NERO  
BLACK



042  
PERLA  
PEARL



077  
RUGGINE  
RUSSET

I colori sono indicativi. Non è possibile garantire uniformità di tono nella tintura dei lotti di tessuto. Resta inteso che lievi differenze di colore verranno accettate al momento dell'ordine.

The colors are just indicative. Actually a steady tone of lots cannot be guaranteed. It remains understood that any slight colour difference will be accepted in case an order is placed.

## CAT.B

704 MISTO POLIESTERE BERLINO - *POLYESTER MIX BERLINO*

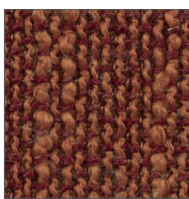
Composizione/Composition: 68% PL, 20% CO, 12% LI. Altezza/Height: 140 cm. Peso/Weight: 670gr. Abrasione/Abrasion: 65.000 Martindale (uso pubblico, uso molto intensivo/public use, very intensive use). BS5852, Antigoccia, idrorepellente/Anti-drip, water repellent.



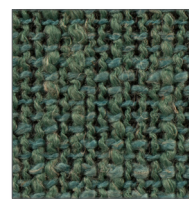
004  
AVORIO  
IVORY



011  
SABBIA  
SAND



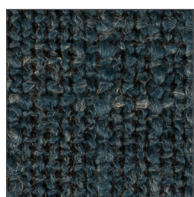
033  
ARANCIO  
ORANGE



H03  
VERDE ACQUA  
AQUA GREEN



063  
VERDE  
GREEN



070  
BLU CHIARO  
LIGHT BLUE



050  
GRIGIO SCURO  
DARK GREY

I colori sono indicativi. Non è possibile garantire uniformità di tono nella tintura dei lotti di tessuto. Resta inteso che lievi differenze di colore verranno accettate al momento dell'ordine.

*The colors are just indicative. Actually a steady tone of lots cannot be guaranteed. It remains understood that any slight colour difference will be accepted in case an order is placed.*

## CAT.B

## 705 POLIESTERE JAKARTA - POLYESTER JAKARTA

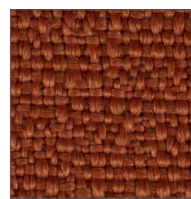
Composizione/Composition: 100% PL riciclato biodegradabile/PL recycled biodegradable. Altezza/Height: 140 cm. Peso/Weight: 800gr. Abrasione/Abrasion: 100.000 Martindale (uso pubblico, uso molto intensivo/public use, very intensive use).



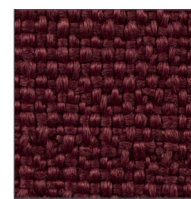
004  
AVORIO  
IVORY



016  
TORTORA  
TAUPE



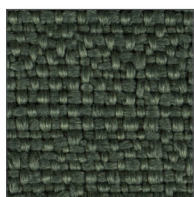
033  
ARANCIO  
ORANGE



040  
BORDEAUX  
BURGUNDY



070  
BLU CHIARO  
LIGHT BLUE



066  
VERDE SCURO  
DARK GREEN



083  
MARRONE SCURO  
DARK BROWN



041  
GRIGIO GHIACCIO  
ICE GREY



060  
GRIGIO SCURO  
DARK GREY

I colori sono indicativi. Non è possibile garantire uniformità di tono nella tintura dei lotti di tessuto. Resta inteso che lievi differenze di colore verranno accettate al momento dell'ordine.

*The colors are just indicative. Actually a steady tone of lots cannot be guaranteed. It remains understood that any slight colour difference will be accepted in case an order is placed.*



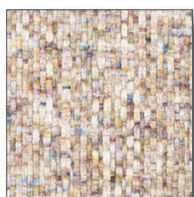
CAT.B

706 POLIESTERE GINEVRA - *POLYESTER GINEVRA*

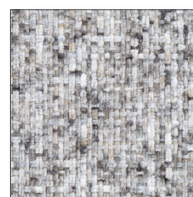
Composizione/Composition: 100% PL. Altezza/Height: 140 cm. Peso/Weight: 460gr. Abrasione/Abrasion: 25.000 Martindale (uso pubblico, uso regolare/public use, regular use).



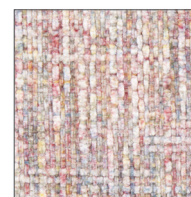
004  
AVORIO  
*IVORY*



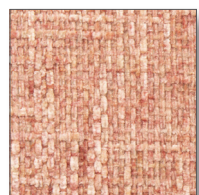
011  
SABBIA  
*SAND*



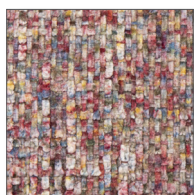
016  
TORTORA  
*TAUPE*



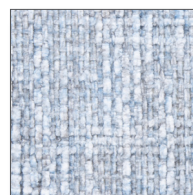
H19  
ROSA CHIARO  
*LIGHT PINK*



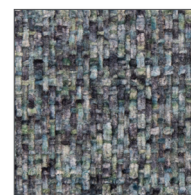
H20  
ROSA SCURO  
*DARK PINK*



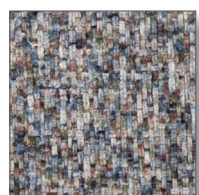
040  
BORDEAUX  
*BURGUNDY*



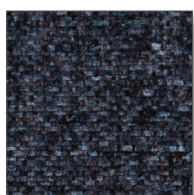
060  
AZZURRO  
*LIGHT BLUE*



069  
PETROLIO  
*PETROL GREEN*



071  
BLU MEDIO  
*MEDIUM BLUE*



073  
BLU SCURO  
*DARK BLUE*

I colori sono indicativi. Non è possibile garantire uniformità di tono nella tintura dei lotti di tessuto. Resta inteso che lievi differenze di colore verranno accettate al momento dell'ordine.







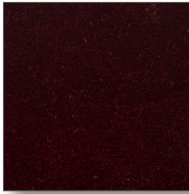

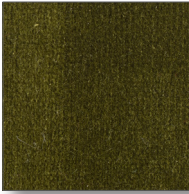

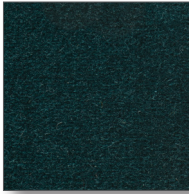






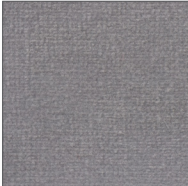
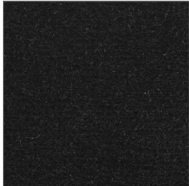

*The colors are just indicative. Actually a steady tone of lots cannot be guaranteed. It remains understood that any slight colour difference will be accepted in case an order is placed.*

## CAT.C

## 032 VELLUTO LOIRA - VELVET LOIRA

Composizione/Composition: 100% Velluto di cotone/Cotton velvet. Altezza/Height: 140 cm. Peso/Weight: 630gr. Abrasione/Abrasion: 100.000 Martindale (uso pubblico, uso molto intensivo/public use, very intensive use). CALTB117, BS5852 part 1 schedule 4 source 0



	004 AVORIO IVORY		011 SABBIA SAND		016 TORTORA TAUPE		024 ROSA PINK
	039 ROSSO RED		038 ROSSO SCURO DARK RED		040 BORDEAUX BURGUNDY		031 VIOLA SCURO DARK VIOLET
	063 VERDE GREEN		066 VERDE SCURO DARK GREEN		069 PETROLIO PETROL GREEN		071 BLU MEDIO MEDIUM BLUE
	E20 BLU NOTTE NIGHTBLUE		072 BLU BLUE		073 BLU SCURO DARK BLUE		044 GRIGIO GREY
	083 MARRONE SCURO DARK BROWN		041 GRIGIO GHIACCIO ICE GREY		050 GRIGIO SCURO DARK GREY		091 NERO BLACK

I colori sono indicativi. Non è possibile garantire uniformità di tono nella tintura dei lotti di tessuto. Resta inteso che lievi differenze di colore verranno accettate al momento dell'ordine.

The colors are just indicative. Actually a steady tone of lots cannot be guaranteed. It remains understood that any slight colour difference will be accepted in case an order is placed.

CAT.C

036 MISTO LINO LISBONA - LINEN MIX LISBONA

Composizione/Composition: 72% LI, 14% CO, 14% VI. Altezza/Height: 140 cm. Peso/Weight: 735gr. Abrasione/Abrasion: 25.000 Martindale (uso pubblico, uso regolare/public use, regular use).



002  
BIANCO  
WHITE



011  
SABBIA  
SAND



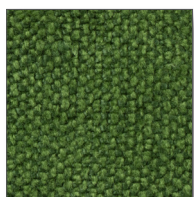
078  
NOCCIOLA  
HAZEL



039  
ROSSO  
RED



060  
AZZURRO  
LIGHT BLUE



062  
VERDE CHIARO  
LIGHT GREEN



066  
VERDE SCURO  
DARK GREEN



072  
BLU  
BLUE



069  
PETROLIO  
PETROL GREEN



045  
GRIGIO CHIARO  
LIGHT GREY



050  
GRIGIO SCURO  
DARK GREY



091  
NERO  
BLACK

I colori sono indicativi. Non è possibile garantire uniformità di tono nella tintura dei lotti di tessuto. Resta inteso che lievi differenze di colore verranno accettate al momento dell'ordine.

The colors are just indicative. Actually a steady tone of lots cannot be guaranteed. It remains understood that any slight colour difference will be accepted in case an order is placed.



## CAT.C

709 POLIPROPILENE AMBURGO - *POLYPROPYLENE AMBURGO*

Composizione/Composition: 100% PP. Altezza/Height: 140 cm. Peso/Weight: 1050 gr. Abrasione/Abrasion: 40.000 Martindale (uso pubblico, uso molto intensivo/public use, very intensive use). CAL117, BS5852 Cigaret test



002  
BIANCO  
*WHITE*



011  
SABBIA  
*SAND*



045  
GRIGIO CHIARO  
*LIGHT GREY*



073  
BLU SCURO  
*DARK BLUE*



057  
ANTRACITE  
*ANTHRACITE GREY*

I colori sono indicativi. Non è possibile garantire uniformità di tono nella tintura dei lotti di tessuto. Resta inteso che lievi differenze di colore verranno accettate al momento dell'ordine.

*The colors are just indicative. Actually a steady tone of lots cannot be guaranteed. It remains understood that any slight colour difference will be accepted in case an order is placed.*



## CAT.C

**710 MISTO POLIESTERE BERNA - MIXED POLYESTER BERNA**

Composizione/Composition: 29% PL, 29% PC, 21% CO, 15% WO, 6% VI. Altezza/Height: 140 cm. Peso/Weight: 820gr. Abrasione/Abrasion: 40.000 Martindale (uso pubblico, uso molto intensivo/public use, very intensive use). CAL117, BS5852 Cigaret test



002  
BIANCO  
WHITE



011  
SABBIA  
SAND



045  
GRIGIO CHIARO  
LIGHT GREY



091  
NERO  
BLACK

I colori sono indicativi. Non è possibile garantire uniformità di tono nella tintura dei lotti di tessuto. Resta inteso che lievi differenze di colore verranno accettate al momento dell'ordine.

*The colors are just indicative. Actually a steady tone of lots cannot be guaranteed. It remains understood that any slight colour difference will be accepted in case an order is placed.*

CAT.C

040 LINO BARCELLONA - LINEN BARCELLONA

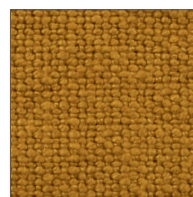
Composizione/Composition: 100% L. Altezza/Height: 138/140 cm. Peso/Weight: 680gr. Abrasione/Abrasion: 30.000 Martindale (uso pubblico, uso intensivo/public use, intensive use).  
BS5852:0 1979 ign cigarette test pass



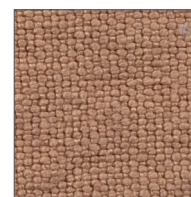
004  
AVORIO  
IVORY



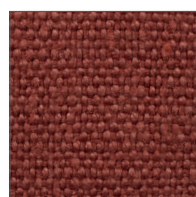
011  
SABBIA  
SAND



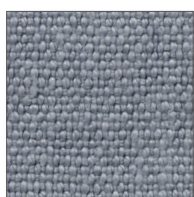
020  
GIALLO SENAPE  
MUSTARD YELLOW



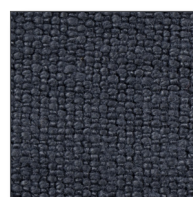
024  
ROSA  
PINK



036  
ROSSO ANTICO  
ANTIQUE RED



060  
AZZURRO  
LIGHT BLUE



072  
BLU  
BLUE



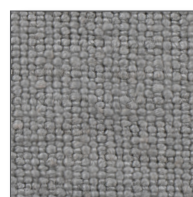
066  
VERDE SCURO  
DARK GREEN



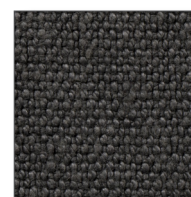
080  
MARRONE CHIARO  
LIGHT BROWN



083  
MARRONE SCURO  
DARK BROWN



045  
GRIGIO CHIARO  
LIGHT GREY



050  
GRIGIO SCURO  
DARK GREY

I colori sono indicativi. Non è possibile garantire uniformità di tono nella tintura dei lotti di tessuto. Resta inteso che lievi differenze di colore verranno accettate al momento dell'ordine.

*The colors are just indicative. Actually a steady tone of lots cannot be guaranteed. It remains understood that any slight colour difference will be accepted in case an order is placed.*

## CAT.D

## 712 MISTO LANA MALMÖ - WOOL MIX MALMÖ

Composizione/Composition: 32% CO, 61% VW, 7% PA. Altezza/Height: 140 cm. Peso/Weight: 1200gr. Abrasione/Abrasion: 25.000 Martindale (uso pubblico, uso regolare/public use, regular use).



002  
BIANCO  
WHITE



011  
SABBIA  
SAND



069  
PETROLIO  
PETROL GREEN



072  
BLU  
BLUE



045  
GRIGIO CHIARO  
LIGHT GREY



050  
GRIGIO SCURO  
DARK GREY

I colori sono indicativi. Non è possibile garantire uniformità di tono nella tintura dei lotti di tessuto. Resta inteso che lievi differenze di colore verranno accettate al momento dell'ordine.

*The colors are just indicative. Actually a steady tone of lots cannot be guaranteed. It remains understood that any slight colour difference will be accepted in case an order is placed.*

## CATE

## 713 LANA DIVINA (KVADRAT) - WOOL DIVINA (KVADRAT)

Composizione/Composition: 100% VW. Altezza/Height: 150 cm. Peso/Weight: 840gr. Abrasione/Abrasion: 45.000 Martindale (uso pubblico, uso molto intensivo/public use, very intensive use), CAL117, crib51MOFTP,UNI9175 11M



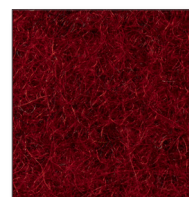
011  
SABBIA  
SAND



021  
GIALLO  
YELLOW



024  
ROSA  
PINK



039  
ROSSO  
RED



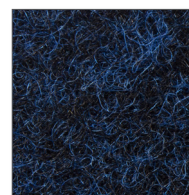
060  
AZZURRO  
LIGHT BLUE



066  
VERDE SCURO  
DARK GREEN



081  
MARRONE  
BROWN



073  
BLU SCURO  
DARK BLUE



045  
GRIGIO CHIARO  
LIGHT GREY



091  
NERO  
BLACK

I colori sono indicativi. Non è possibile garantire uniformità di tono nella tintura dei lotti di tessuto. Resta inteso che lievi differenze di colore verranno accettate al momento dell'ordine.

*The colors are just indicative. Actually a steady tone of lots cannot be guaranteed. It remains understood that any slight colour difference will be accepted in case an order is placed.*



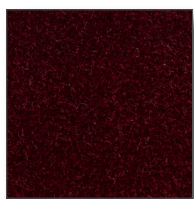
## CATE

## 714 COTONE VENEZIA - COTTON VENEZIA

Composizione/Composition: 100% CO. Altezza/Height: 140 cm. Peso/Weight: 1200gr. Abrasione/Abrasion: 50.000 Martindale, CAL TB117 (uso pubblico, uso molto intensivo/public use, very intensive use).



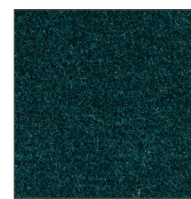
002  
BIANCO  
WHITE



040  
BORDEAUX  
BURGUNDY



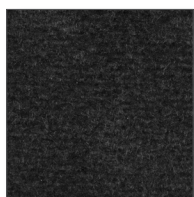
062  
VERDE CHIARO  
LIGHT GREEN



066  
VERDE SCURO  
DARK GREEN



073  
BLU SCURO  
DARK BLUE



050  
GRIGIO SCURO  
DARK GREY

I colori sono indicativi. Non è possibile garantire uniformità di tono nella tintura dei lotti di tessuto. Resta inteso che lievi differenze di colore verranno accettate al momento dell'ordine.

*The colors are just indicative. Actually a steady tone of lots cannot be guaranteed. It remains understood that any slight colour difference will be accepted in case an order is placed.*

CAT.P

**050 PELLE NIAGARA - LEATHER NIAGARA**

Chrome tanning bovine raw hides, pigmented, corrected grain, aniline through dyed. Thickness: 1.4/1.6 mm

PULIRE SOLO CON PANNINO UMIDO E DETERGENTE NEUTRO/CLEAN ONLY WITH A DAMP CLOTH AND A NEUTRAL DETERGENT



002  
BIANCO  
WHITE



015  
BEIGE  
BEIGE



003  
POLVERE  
DUSTY



011  
SABBIA  
SAND



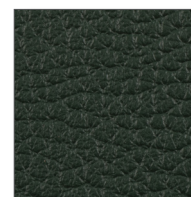
021  
GIALLO  
YELLOW



033  
ARANCIO  
ORANGE



039  
ROSSO  
RED



E21  
COCCO  
COCONUT



090  
AVANA  
HAVANA



081  
MARRONE  
BROWN



044  
GRIGIO  
GREY



050  
GRIGIO SCURO  
DARK GREY



091  
NERO  
BLACK

I colori sono indicativi. Non è possibile garantire uniformità di tono nella tintura dei lotti di tessuto. Resta inteso che lievi differenze di colore verranno accettate al momento dell'ordine.

*The colors are just indicative. Actually a steady tone of lots cannot be guaranteed. It remains understood that any slight colour difference will be accepted in case an order is placed.*

## CAT.O

049 PELLE RIO - *LEATHER RIO*

Chrome tanning, bovine of European origin, lightly buffed natural grain, pigmented and protective coat, with a soft, waxy feel and semi-matt appearance. Thickness: 0.9/1.1 mm

PULIRE SOLO CON PANNINO UMIDO E DETERGENTE NEUTRO/CLEAN ONLY WITH A DAMP CLOTH AND A NEUTRAL DETERGENT

	002 BIANCO <i>WHITE</i>		E22 LATTE <i>MILK</i>		004 AVORIO <i>IVORY</i>		011 SABBIA <i>SAND</i>
	016 TORTORA <i>TAUPE</i>		021 GIALLO <i>YELLOW</i>		033 ARANCIO <i>ORANGE</i>		039 ROSSO <i>RED</i>
	040 BORDEAUX <i>BURGUNDY</i>		E23 PRUGNA <i>PLUM</i>		066 VERDE SCURO <i>DARK GREEN</i>		060 AZZURRO <i>LIGHT BLUE</i>
	072 BLU <i>BLUE</i>		E20 BLU NOTTE <i>DARK BLUE</i>		080 MARRONE CHIARO <i>LIGHT BROWN</i>		083 MARRONE SCURO <i>DARK BROWN</i>
	044 GRIGIO <i>GREY</i>		050 GRIGIO SCURO <i>DARK GREY</i>		091 NERO <i>BLACK</i>		

I colori sono indicativi. Non è possibile garantire uniformità di tono nella tintura dei lotti di tessuto. Resta inteso che lievi differenze di colore verranno accettate al momento dell'ordine.

*The colors are just indicative. Actually a steady tone of lots cannot be guaranteed. It remains understood that any slight colour difference will be accepted in case an order is placed.*

CAT.ZC

051 PELLE CHURCHILL - *LEATHER CHURCHILL*

Chrome tanning, bull hides with european origin, aniline - full grain, through dyeing aniline. Thickness: 1.0/1.2 mm

PULIRE SOLO CON PANNINO UMIDO E DETERGENTE NEUTRO/CLEAN ONLY WITH A DAMP CLOTH AND A NEUTRAL DETERGENT



003  
POLVERE  
*DUSTY*



084  
CUOIO  
*LEATHER*



081  
MARRONE  
*BROWN*



085  
TESTA DI MORO  
*DARK BROWN*



045  
GRIGIO CHIARO  
*LIGHT GREY*



057  
ANTRACITE  
*ANTHRACITE*

I colori sono indicativi. Non è possibile garantire uniformità di tono nella tintura dei lotti di tessuto. Resta inteso che lievi differenze di colore verranno accettate al momento dell'ordine.

*The colors are just indicative. Actually a steady tone of lots cannot be guaranteed. It remains understood that any slight colour difference will be accepted in case an order is placed.*



CAT.ZME

052 PELLE AMUR - LEATHER AMUR

Through dyed, bovine of European origin, with a distressed vintage effect, this high quality article is obtained starting with nubuck leather, which is slightly levelled with aniline and hand rubbed to give an aged effect. Thickness: 0.9/1.1 mm

PULIRE SOLO CON PANNINO UMIDO E DETERGENTE NEUTRO/CLEAN ONLY WITH A DAMP CLOTH AND A NEUTRAL DETERGENT



011  
SABBIA  
SAND



016  
TORTORA  
TAUPE



024  
ROSA  
PINK



090  
AVANA  
HAVANA



083  
MARRONE SCURO  
DARK BROWN



045  
GRIGIO CHIARO  
LIGHT GREY



057  
ANTRACITE  
ANTHRACITE

I colori sono indicativi. Non è possibile garantire uniformità di tono nella tintura dei lotti di tessuto. Resta inteso che lievi differenze di colore verranno accettate al momento dell'ordine.

*The colors are just indicative. Actually a steady tone of lots cannot be guaranteed. It remains understood that any slight colour difference will be accepted in case an order is placed.*

## CAT.ZA

## 054 PELLE PURUS - LEATHER PURUS

Chrome tanning, aniline dyed, semi aniline full grain, European bovine hide. Thickness: 1.0/1.2 mm

PULIRE SOLO CON PANNINO UMIDO E DETERGENTE NEUTRO/CLEAN ONLY WITH A DAMP CLOTH AND A NEUTRAL DETERGENT



002  
BIANCO  
WHITE



004  
AVORIO  
IVORY



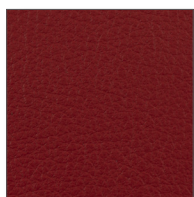
152  
NUDE  
CARNATION



016  
TORTORA  
TAUPE



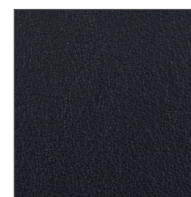
033  
ARANCIO  
ORANGE



039  
ROSSO  
RED



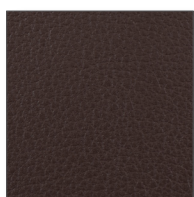
040  
BORDEAUX  
BURGUNDY



073  
BLU SCURO  
DARK BLUE



084  
CUOIO  
LEATHER



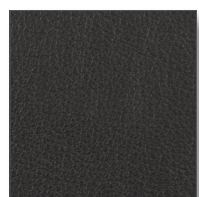
E24  
COGNAC  
COGNAC



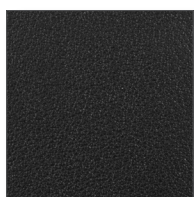
083  
MARRONE SCURO  
DARK BROWN



045  
GRIGIO CHIARO  
LIGHT GREY



050  
GRIGIO SCURO  
DARK GREY



091  
NERO  
BLACK

I colori sono indicativi. Non è possibile garantire uniformità di tono nella tintura dei lotti di tessuto. Resta inteso che lievi differenze di colore verranno accettate al momento dell'ordine.

*The colors are just indicative. Actually a steady tone of lots cannot be guaranteed. It remains understood that any slight colour difference will be accepted in case an order is placed.*

